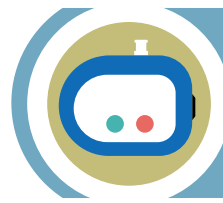
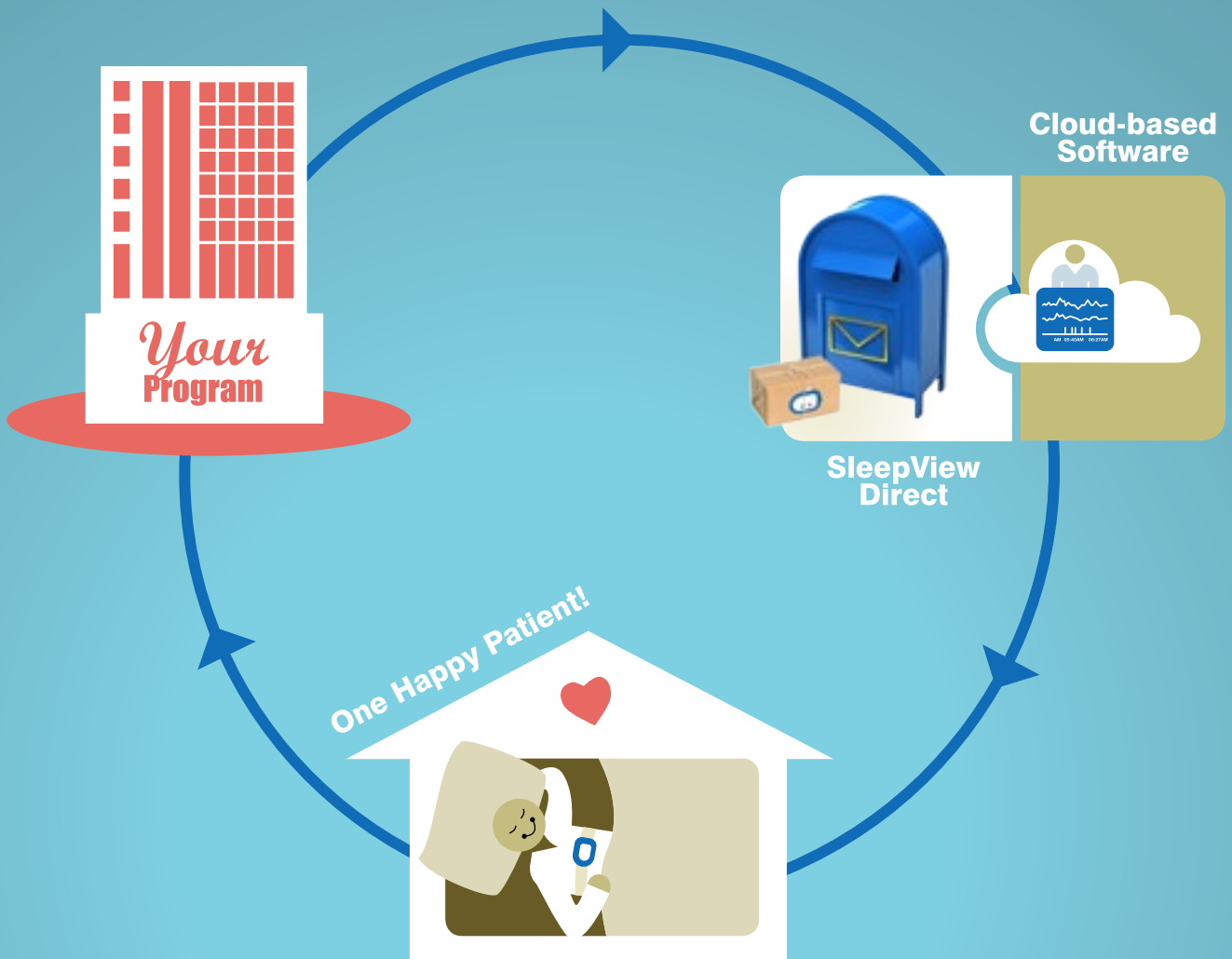


**SleepView<sup>SM</sup> Direct HSAT** allows your sleep center to add a mail-order service directly to your patients with minimal time from your staff.



**SleepView<sup>SM</sup> DIRECT**



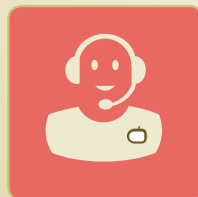
Customizable Kit Prep



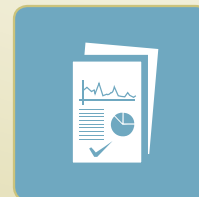
Smallest Lightest



Shipping & Handling



Patient Support



Customizable Reports

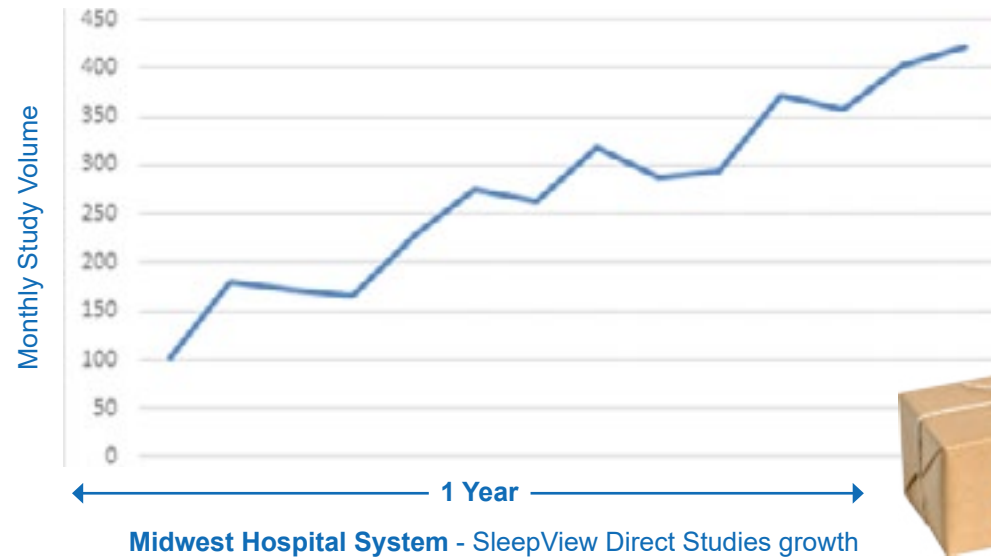


Manual Scoring

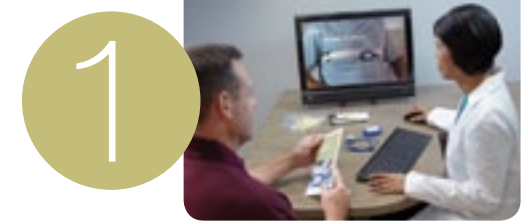
Expanding the reach of your sleep services today and tomorrow  
1.877.CleveMed | 1.877.253.8363 | [www.ClevedmedSleepview.com](http://www.ClevedmedSleepview.com)

**CleveMed**  
Cleveland Medical Devices Inc.

# 4X STUDY GROWTH



## SLEEPVIEW<sup>SM</sup> DIRECT WORKFLOW



1 Healthcare provider determines HST patient eligibility. If eligible, provider describes the home test to the patient and sends fulfillment order to CleveMed.



2 CleveMed schedules test with patient, describes sensor placement on phone, and mails a SleepView Direct kit to the patient's home. The patient can call CleveMed's support phone number for assistance 24/7.



3 After a good study is completed, the patient mails the SleepView Direct kit to CleveMed for data download.



4 CleveMed reviews recordings to ensure a good study is available. Email notification is sent to sleep center's specialists when the study is available for scoring and interpretation (manual scoring by RPSGT's is available). **Co-branding and workflow customization for large volume organizations are available.**

## BENEFITS OF SLEEPVIEW<sup>SM</sup> DIRECT

- Quickly grow and adapt your lab
- Reach patients outside your local area
- Increase revenue without adding resources
- Kit customization and co-branding available
- High test success rate
- Monitor follows AASM recommendations
- Smallest & lightest monitor for simple home use
- Select your own sleep physician or technologist (network of sleep specialists available, if needed)

**Sleep specialists** are now able to not only better compete in their own markets but expand their reach like never before.

- **Dr. Tim Kowalski** CleveMed Medical Director

## LEVELS OF SERVICE\*\*

Bundled study pricing includes:	SleepView Monitor	Web Portal	Disposable Accessories	Shipping & Handling	Patient Phone Support	Manual Scoring by RPSGT
Gold	✓	✓	✓	✓	✓	✓
Silver	✓	✓	✓	✓	✓	

\*\* If you need a sleep physician to read your studies, we will connect you with physicians licensed in your state. SleepView Direct is available throughout the United States and US territories. Additional fees may apply for mailing to US territories.

# SLEEPVIEW MONITOR SPECIFICATIONS

Sleep Device Type	Type III
Channel Count	8
Dimensions	3" x 2.6" x 0.7"
Weight	2 oz.
Power	1 AAA battery (powers 1 sleep study)
Memory	1 GB internal memory (multiple-night recording)
8 channels	Heart rate Pulse oximetry Respiratory airflow (compatible with CPAP) RIP respiratory effort belt Snore Body position Auxiliary (Second RIP respiratory effort, Thermal airflow, or IDcheck™) Actigraphy



## SleepView® Direct Kit Contents

- SleepView® Monitor
- AAA Alkaline Battery
- Nasal/Oral Cannula
- ReadyRIP™ Effort Belt
- Pulse Oximetry Sensor
- Adhesive to hold sensors
- How to Use SleepView®
- Patient Instructions
- Patient Questionnaires


## Minimum System Requirements for Web Portal Software Option

Microsoft® Windows® 8.1, 10, or newer  
2.4 GHz processor  
1 GB of RAM  
2 GB available hard disk space  
USB port  
Google Chrome™ (See Web Portal for the complete list of supported web browsers)

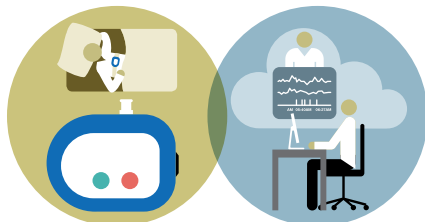


Caution: Federal law restricts this device to sale by or on the order of a healthcare provider only. Windows, and Microsoft are registered trademarks of Microsoft Corporation. Chrome is a trademark of Google LLC.

Crystal PSG™, ReadyRIP™, and IDcheck™ are trademarks of Cleveland Medical Devices Inc. SleepView® is manufactured by and a registered trademark of Cleveland Medical Devices Inc. SleepView™ Direct is a service mark of Cleveland Medical Devices Inc.

 SleepView® is made in the U.S.A with patient phone support based in the U.S.A

SleepView® Monitor      SleepView™ Portal



Expanding the reach of your sleep services today and tomorrow  
1.877.CleveMed | 1.877.253.8363 | [www.CleveMedSleepview.com](http://www.CleveMedSleepview.com)

**CleveMed**  
Cleveland Medical Devices Inc.