



What is Sapphire PSG?

Sapphire PSG is a complete 22-channel sleep system with state-of-the-art wireless hardware and Crystal PSG software for managing patient, data acquisition, scoring and reporting.

Flexible Package

Wireless Type I PSG system for attended, remotely attended & unattended sleep studies.

Wireless and Portable

Integrated headbox, amplifiers, transducers and data telemetry into one hand-held unit. Entire sleep system fits in a compact carrying case.

Easy Installation

Set-up new sleep facility or expansion within the hour, no need for expensively hard-wiring with cables.

Untethered Monitoring

Wireless monitoring enhances patient comfort and mobility.

Multi-Purpose Facility

Entire sleep system is easily stored away when not in use, so your night-time sleep lab can also be a daytime clinic.

Perfect Fit for Sleep Research Needs

Cost-effectively meets all sleep research protocols. Portable, so clinical studies can be conducted anywhere.

Scoring and Reporting Software

View and score raw data using full PSG capable software. Customizable reporting. Easy patient record management.

What's included

- CleveMed Soft Carrying Case
- Sapphire PSG
- Sapphire PSG Computer Unit
- Sapphire PSG User Guide
- Crystal PSG Software
- Crystal PSG User Guide
- SD Card
- External Card Reader
- USB Data Cable
- Rechargeable Batteries (AA) with Charger
- CPAP Titration Kit
- RIP Belt (pkg of 2)
- Abdominal Interface Cable
- Thoracic Interface Cable
- Gold Cup Electrode (72" pkg of 10)
- Nasal Cannula/Oral Airflow without filter (84" tube)
- Pulse Oximeter Finger Sensor & flexiwrap adhesive (pkg of 25)
- Pulse Oximeter Interface
- Sleep Position Sensor (1.5 mm DIN female)
- Snap Electrode Leads (72" pkg of 12)
- Thermistor Kit

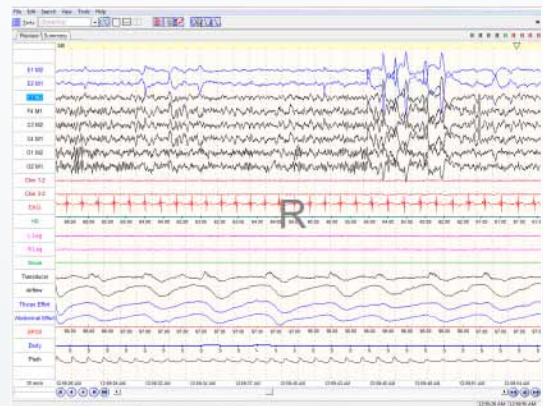


22 channels

- | | |
|---------------------------------|------------------------------|
| 6 EEG channels | Thoracic Effort |
| 2 EOG channels | Abdominal Effort |
| 2 Chin EMG channels | Thermistor |
| 1 ECG channel | Body Position |
| 3 EMG channels | Auxiliary DC |
| • Left leg | Airflow (pressure based) |
| • Right leg | Snore (derived from airflow) |
| • 1 additional EMG or snore mic | Pulse Oximetry |

Minimum system requirements

- PC Computer with USB 2.0 port
- Microsoft® Windows Vista or later
- Minimum 1 GB of RAM
- Minimum of 2 GB of disk space
- Optical (CD/DVD) Drive
- Display with 1024 x 768 resolution or higher
- Microsoft® Word



Sapphire PSG records conventional physiological signals. Sleep lab methodology with wireless monitoring.

It is always the provider's responsibility to determine coverage and submit appropriate codes, modifiers, and charges for services rendered. Contact your local insurance carrier/payer for interpretation of appropriate coverage and coding policies. | Transmission distance varies based on the operating frequency and the building architecture. | Loaner units available for customers in the U.S. | Acknowledgments: This work was supported by Small Business Innovation Research grants from the National Institutes of Health (NINDS, NHLBI, NIMH) and the Department of Defense. | Caution: Federal law restricts this device to sale by or on the order of a physician only. | Crystal PSG and Sapphire PSG are trademarks of Cleveland Medical Devices Inc., Cleveland, OH. | Sapphire PSG is FDA cleared to market.

Patient unit

Dimensions: 8.5" x 3.8" x 1.4" (not including antenna)

Weight: 1.2 lbs (538 g) with batteries

Power: 4 AA alkaline batteries, 12 hours continuous use

Operating Frequency:

2.4 GHz (ISM band) or 902 - 928 MHz (ISM band)

Data Transmission Range: 100 feet, line of sight

Memory: Removable SD memory card

Computer unit

Dimensions: 3" x 4" x 1.4"

Weight: 7 oz (200 g)

Power: USB

PC Interface: USB



Expanding the reach of your sleep services today and tomorrow

1.877.CleveMed | 1.877.253.8363 | www.CleveMed.com/SapphirePSG

CleveMed

Cleveland Medical Devices Inc.